

Design Collection



bdbarcelona.com

Since its origins in the 1970's, BD Barcelona Design has always been an atypical company. Its founders and still current owners, who come from an architectural background rather than the business field, have oriented BD's production from the very start by cultivating beauty, in some cases above function. Accompanied with artisanal processes instead of mass production, the new products always have more proximity to art than industrial design. Characterised by superior quality, short-series productions (and on occasion limited editions), and unique pieces due to crafted manufacturing. In the 80's, BD pleasantly surprised by editing Gaudí's furniture for his famous buildings and in the early 90's, BD again astounded by introducing an exclusive first collection of furniture and lamps designed by Dalí. More recently, Collections and Designers with an accentuated artistic profile such as Jaime Hayon, Campana Brothers, Doshi Levien, Neri&Hu, Konstantin Grcic, Ross Lovegrove and Stephen Burks continue to point the way where design and art meet together.

Design meets art. Since 1972

Design Collection

June 2018

Storage and shelving

Armchairs and sofas

Tables

Chairs and stools

Accessories and lighting

Public seating



Design Collection

June 2018

Storage and shelving

Armchairs and sofas

Tables

Chairs and stools

Accessories and lighting

Public seating

Couture cabinet

Färg & Blanche

Fredrik Färg and Emma Marga Blanche have been developing a technique over various years which they have registered as Wood Tailoring™. With this they have created patterns which hold aesthetic value within themselves and offer surprising and emerging results. One example is the Couture Cabinet.



Dalia cabinet

Joel Escalona

The Dalia Cabinet is inspired in traditional iron forging, a method used with the purpose of protecting and decorating. Condensing the strident and baroque of Mexican culture into one bare structure. A functional ornament where its design not only projects elegance and complexity, but allows for the appreciation of contents - a presentation of permeating voices from the objects placed within.



Aquario cabinet

Campana brothers

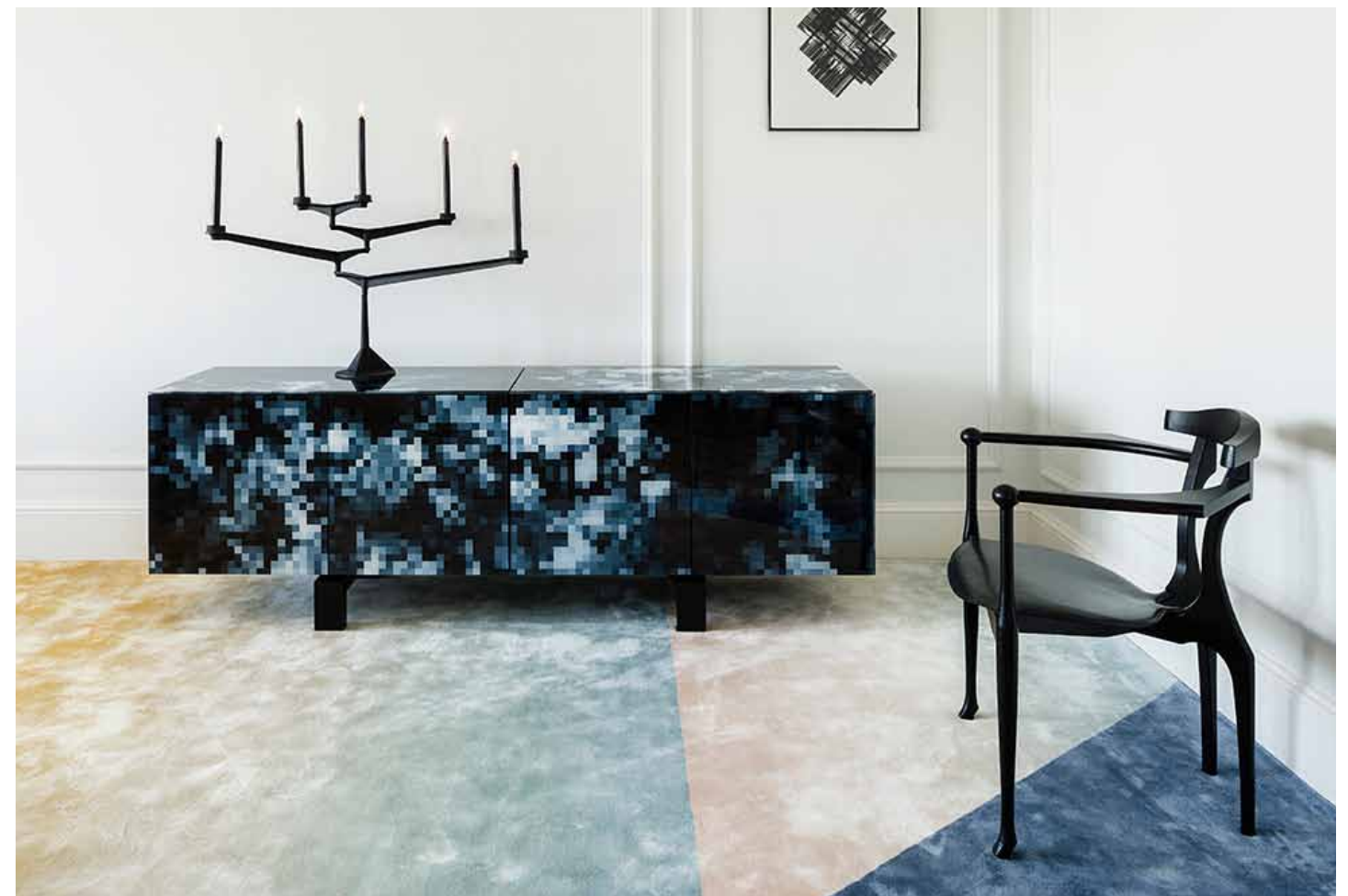
A design inspired in an aquarium having the artistic marked accent of its authors. They like to integrate the artisanal along with industrial production, creating hybrids in distinct materials. The mix, colour and creative chaos are all characteristic of the Campanas' works, presented in the cabinet released by BD.



Dreams cabinet

Cristian Zuzunaga

The Dreams Cabinet is presented in three colours: Colour, Black and White. Few pieces allow for interventions with such personality without affecting the function for which they have been created. They convert into sculptures for a living room in a house or a hotel foyer.



Shanty cabinet

Doshi Levien

Shanty is inspired in the patchwork of corrugated steel sheets which are used to construct many temporary or provisional homes, which exist in the whole world. Its beauty lies in imperfection. This spontaneous composition of superimposed surfaces in different colours is recreated with a wavy front. Its body has an assymetrical volume and each door opens differently.



Catherine Weinstock's room at Holiday House. Designed by CW DESIGN - UK



STORAGE AND SHELIVING / ARMCHAIRS AND SOFAS / TABLES / CHAIRS AND STOOLS / ACCESSORIES AND LIGHTING / PUBLIC SEATING

Multileg cabinet - Marble version

Jaime Hayon

Showtime is a collection where in it is reflected the classic and modernity of its contrast which have been, from always, the very essence of our company. For us this project is a number '10' and we celebrate with a new more glossy finish, and luxury marbles for the Multileg Cabinet.



Multileg cabinet showtime

Jaime Hayon

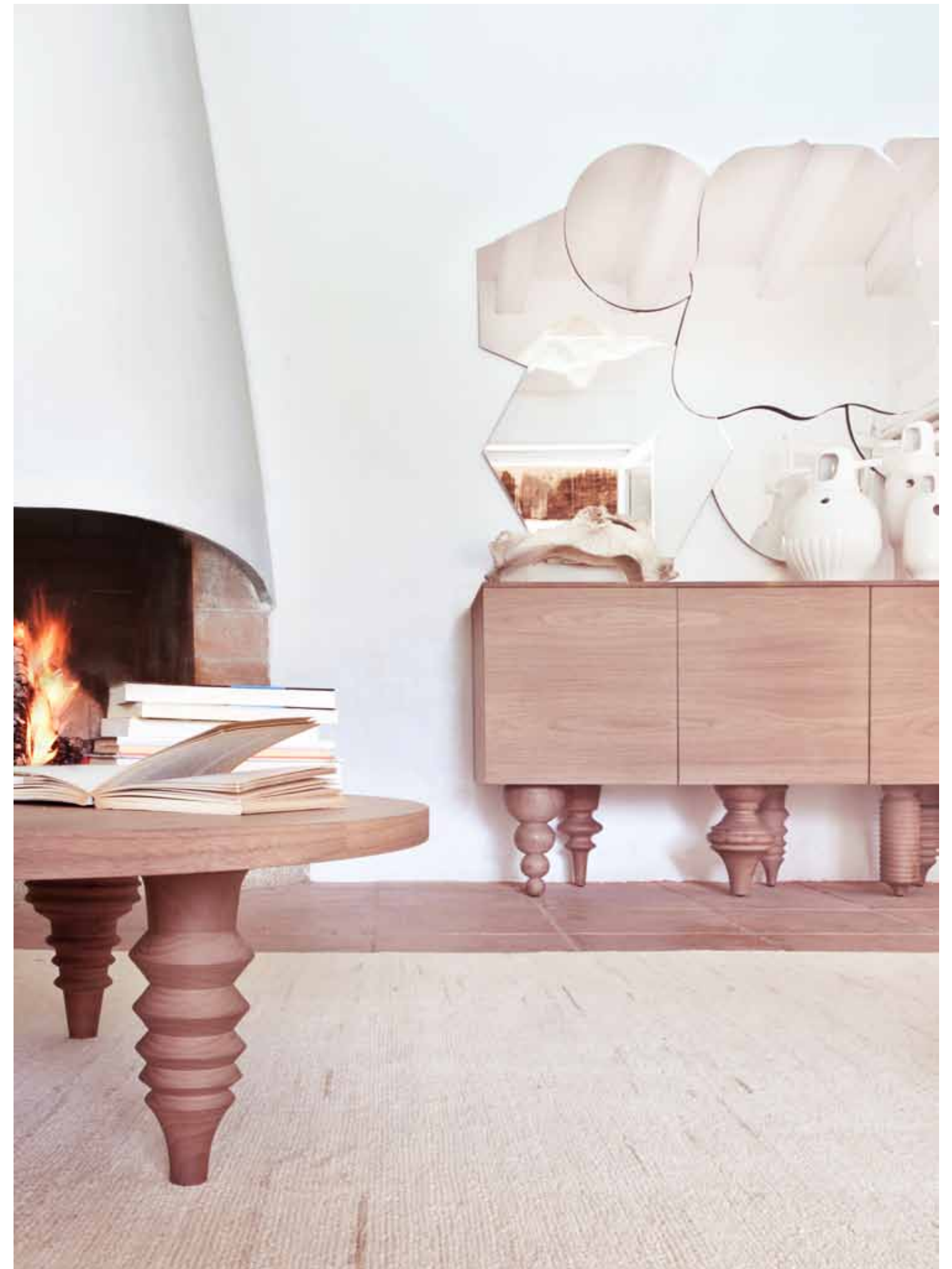
With all the collaborations between Jaime Hayon and BD, this is undoubtedly the bestselling piece. We developed it within a few weeks before the Milano Furniture Fair in 2006, where the Showtime Collection was presented for the first time which was a complete success from the very first day. Twelve distinct legs give character to this cabinet - the first to enter our catalogue.



Multileg cabinet - Walnut version

Jaime Hayon

When in 2006 we decided to bet on Jaime Hayon's talent with the Showtime Collection, he was still a young emerging artist with a profile not too common at the time. He has refined his designs over the years. One of the iconic pieces in the Collection is the Multileg Cabinet which BD presents with a new wooden, walnut finish, with the same virtues as its predecessor: modular, multi-use and multileg.



Tout va bien cabinet

Antoine et Manuel

This Cabinet designed by Antoine and Manuel for this Collection edited by BD is a surprising mixture of applied arts, hieroglyphic language, contemporary graphics, fantasy and optimism. Produced with yesteryear quality, using here and now technology in white.



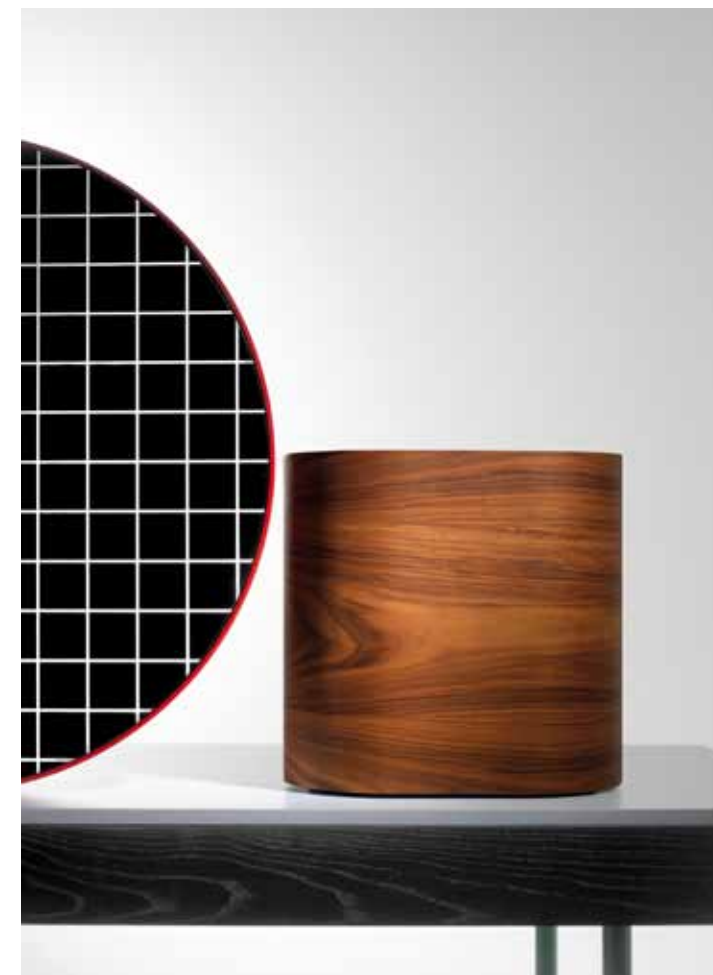
Quinta Villa - Portugal



Chandlo

Doshi Levien

“Chandlo” means moonlike in form, or a bindi which is a coloured dot worn by Indian women on their foreheads, making reference to the large framed mirror which stands out in this piece. Its composition is apparently abstract and is based on gestures and daily rituals carried out when we dress and groom.



The Narcissist

Neri and Hu

The Narcissist is designed in China and is manufactured in Barcelona. It seems to be totally the opposite to what the world is doing, but is a sign of what's to come. In Lyndon and Rossana's works, features of contemporary western design converge with traditional oriental roots.

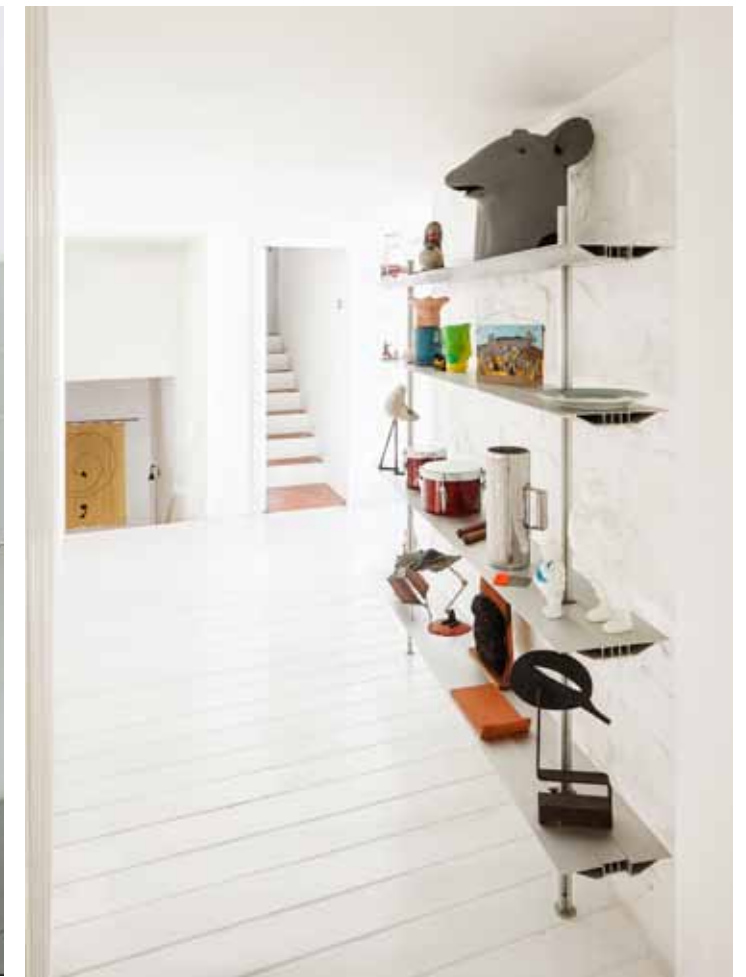


STORAGE AND SHELVING / ARMCHAIRS AND SOFAS / TABLES / CHAIRS AND STOOLS / ACCESSORIES AND LIGHTING / PUBLIC SEATING

Hypóstila shelving

Lluís Clotet and Oscar Tusquets

The Hypostila shelving was designed in 1979 by Lluís Clotet and Oscar Tusquets to support important amounts of weights on minimum profiles, reaching an infinity of lengths and planifications.



Cornisa shelving

Lluís Clotet and Oscar Tusquets

Having been in our catalogue for nearly 30 years, the Cornisa shelving is one of our most functional designs. With depths of 15cm or 26cm, it's ideal for kitchens, offices, foyers and many other places.



Hialina shelving

Lluís Clotet and Oscar Tusquets

This shelving is one of our longest living designs. Its been in production since 1973 and is a timeless design. Since, we have equipped an infinity of offices, dining rooms, kitchens, chemists, and bars amongst other places.





Design Collection

June 2018

Storage and shelving

Armchairs and sofas

Tables

Chairs and stools

Accessories and lighting

Public seating

Grasso armchair

Stephen Burks

“Grasso is not fat. Grasso is more than fat. It’s overflowing.”
This is how Stephen Burks sums up his new collection for BD.
An armchair that pursues a visual “ultra-comfort”, and invites
you to sit on it. The leather upholstery oozes over the bare iron
structure to contrast with the most luxurious touch of the skin.
Available in various structure and upholstery colors.





STORAGE AND SHELVING / **ARMCHAIRS AND SOFAS** / TABLES / CHAIRS AND STOOLS / ACCESSORIES AND LIGHTING / PUBLIC SEATING

Couture armchair

Färg and Blanche

The Couture Armchair is a fusion of artisanal and industrial techniques. The stitches represent a topographic map resulting in an organic pattern, simulating the growth in wood. The use of gradient colours for the wood, amplifies the effect of layers used and increases the sensation of unifying hard materials. The result is an armchair with strong personality which holds maximum evidence of artisanal processes.



Ibiza Airport by Sky Valet Spain/REDEX Creatividad - Spain



Lounger

Jaime Hayon

In the wake of its success, BD has added other pieces to the Collection by Jaime Hayon, one of these being: The Lounger. It has an elegance carried throughout the series, the comfort that this typology requires in an armchair and the unmistakable hallmark in Hayon's designs – contrasts between classicism and modernity, monochrome finishes and quality manufacturing with material or leather upholstery.





Business Playground by Mathieu Lehanneur - UK



Massimo Dutti Madrid - Spain



Private housedesigned by Ace of Space - Estonia

Low lounge

Jaime Hayon

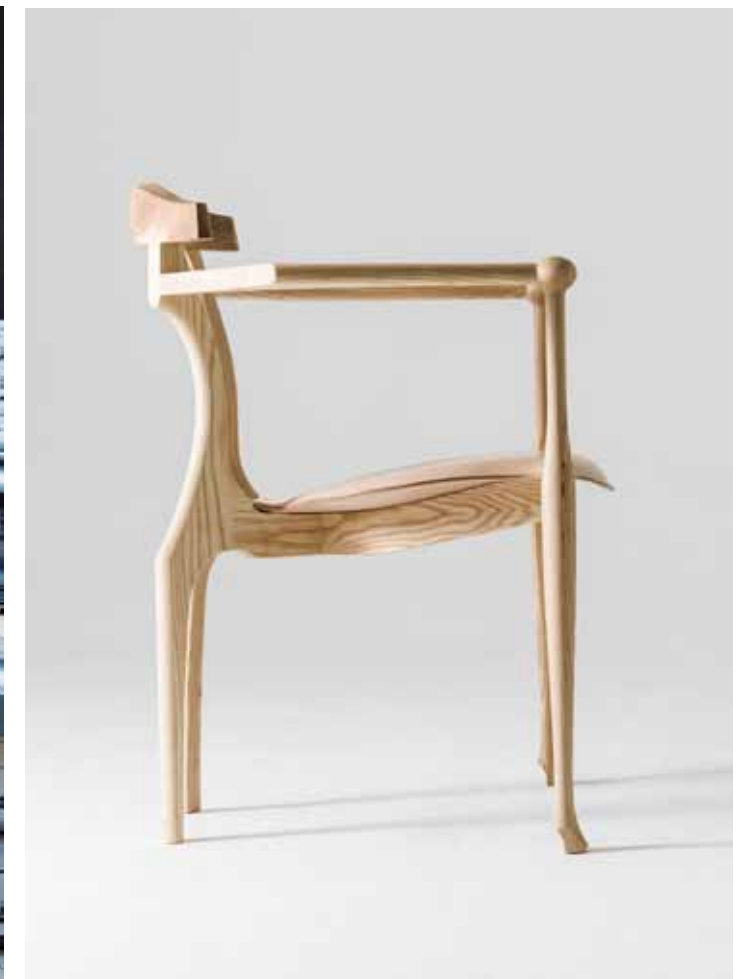
When in 2006, we decided to bet on Jaime Hayon's talent and successful Showtime Collection, he was still an emerging youngster with an artistic profile not so common at the time. He has refined this over the years. In 2009, after much success with the collection, BD introduced a new piece: Lounger armchair, followed by the Low Lounger. A newer version with a lower backrest, specially thought for the contract market holding Hayon's unmistakable hallmark.



Gaulino easy chair

Oscar Tusquets

The Gaulino Easy Chair is a natural evolution of the iconic Gaulino Chair, it being a little lower and wider to allow for a totally new use. It fulfills the function of an armchair but is visually much lighter.



Gardenias indoor

Jaime Hayon

The Gardenias Collection is the second largest collection by Jaime Hayon for BD. It has quality, personality, elegance and just the right amount of romanticism and much versatility for the home as well as contract. The indoor collection includes an armchair and a sofa with a more refined image, which we present with new finishes and upholstery.



EF Brighton school - UK (photo by Alan Williams)



Linkedin office Madrid - Spain (By Il Prisma Architecture)



Gardenias outdoor

Jaime Hayon

Gardenias is the second collection by Jaime Hayon for BD. It's made from extruded and cast aluminium, inspired in romantic gardens from the middle of the 20th Century.



STORAGE AND SHELVING / **ARMCHAIRS AND SOFAS** / TABLES / CHAIRS AND STOOLS / ACCESSORIES AND LIGHTING / PUBLIC SEATING

Poltronas Showtime indoor

Jaime Hayon

Showtime was born as a collection for furniture designed for the home with the versatility and personality required in contract. A collection where plastic coexists with padded upholstery, the gloss of painted wood and the tradition of best ceramics. Showtime reflects, in its classicism and modernity with its contrasts which have been, from always, the very essence of BD.



Groninger, Netherlands.

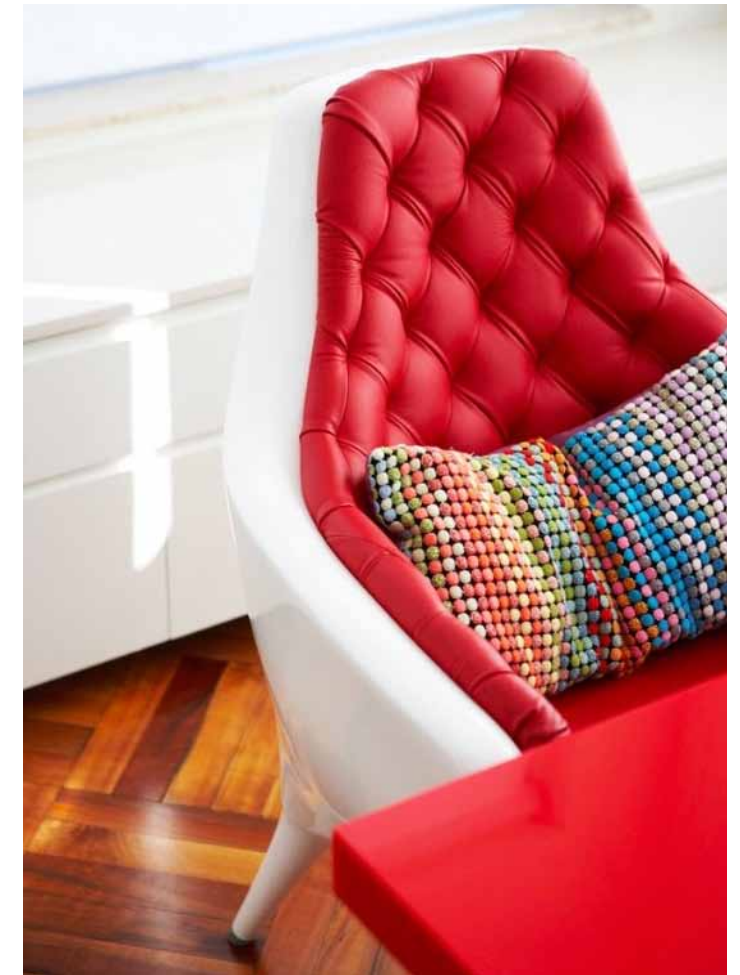


STORAGE AND SHELVING / **ARMCHAIRS AND SOFAS** / TABLES / CHAIRS AND STOOLS / ACCESSORIES AND LIGHTING / PUBLIC SEATING



Camper Together store - Spain

Madrid Casino - Spain



Small luxury hotel of Witte Lelle Antwerp - Belgium.

Bellevue Hill Residence de Scott Westin Arch., Australia.

Poltronas Showtime outdoor

Jaime Hayon

The poltrona, sofa and poltrona with cover are all made from rotomoulded polyethylene carrying Jaime Hayon's unmistakable hallmark. A classic in BD's catalogue.



Dalilips

Salvador Dalí & Oscar Tusquets

Designed in 1972 by Salvador Dalí along with Oscar Tusquets for the Mae West Hall at the Theatre Museum in Figueras. Since 2004 it's been produced in rotomoulded polyethylene making it apt for outdoors.

© Salvador Dalí, Fundació Gala-Salvador Dalí, Barcelona, 2017



Mobilia - Australia

STORAGE AND SHELVING / **ARMCHAIRS AND SOFAS** / TABLES / CHAIRS AND STOOLS / ACCESSORIES AND LIGHTING / PUBLIC SEATING



Design Collection

June 2018

Storage and shelving

Armchairs and sofas

Tables

Chairs and stools

Accessories and lighting

Public seating

2001 side tables

Otto Canalda and Ramón Úbeda

The 2001 Side Tables are made from an ultra-clear glass and a pyrex tube mirrored base, having no joinings. The metallic brilliance creates an optical illusion, evoking a perfect future not belonging to the past.



Monkey side table

Jaime Hayon

Few pieces have achieved bestseller success and simultaneous publishing as this singular side table by Jaime Hayon. It is functional, has quality and a touch of humour, which is always welcome in the times we are living in. Made from architectonic concrete in grey or black. Grey finish is apt for indoor and outdoor.





Torre Madrid Hotel, interior design by Jaime Hayon - Spain

STORAGE AND SHELVING / ARMCHAIRS AND SOFAS / **TABLES** / CHAIRS AND STOOLS / ACCESSORIES AND LIGHTING / PUBLIC SEATING

Side table B

Konstantin Grcic

A solid and elegant side table of service, signed by one the most internationally prestigious designers, Konstantin Grcic. Made from architectonic concrete in grey or black. Grey finish is apt for indoor and outdoor.



Table B - Wood version

Konstantin Grcic

The Table B, which inaugurated the Extrusions Collection in 2009, can reach up to five metres using a simple profile of extruded aluminium. Its apparent simplicity covers a complex technical development where important engineers have participated. The result is a piece of excelling craftsmanship, carrying the German designers character.



Micasa Volc - Brasil



Micasa Volc - Brasil

Table B - Stone version

Konstantin Grcic

The Table B has converted into a classic design of the 21st century with lengths from 1.8m to 5m. The outdoor version can be installed with architectonic concrete leg(s) or stainless steel rod legs.



Table B - Steel version

Konstantin Grcic

The Table B has converted into a classic design of the 21st century with lengths from 1.8m to 5m. The outdoor version can be installed with architectonic concrete leg(s) or stainless steel rod legs.



Private House

Table B cable management

Konstantin Grcic

Grcic works thinking about the industry and makes an art of it. He has a personal style which is incomparable to any other. He's recognised for his functional designs and simplicity, though only in appearance because hidden behind every approach is found a lesson in technique.

The Bachmann Cable Management system has an open-close anodised aluminium lid, permitting access to the inside from any point of the table. Included are power sockets, network and VGA + stereo connections.



Gaulino table

Oscar Tusquets Blanca

When BD acquired the marketing rights of the Gaulino Chair, we immediately saw that a chair with such personality needed a table. Oscar Tusquets decided to use some of the distinctive elements of the chair in this elegant table, available in various sizes and finishes.



Micasa Showroom - Brasil





Multileg side table

Jaime Hayon

The Multileg Table came about in an obvious way, springing from the Multileg Cabinet. Using the same legs, Jaime designed four table tops, converting them into functional sculptural centre pieces.





Design Collection

June 2018

Storage and shelving

Armchairs and sofas

Tables

Chairs and stools

Accessories and lighting

Public seating

Showtime nude chair

Jaime Hayon

The Showtime Nude Chair is simpler than the previous version, but hasn't lost any of its personality. We have called it 'Nude' as we have taken the essential and added new wooden legs and a more ergonomic backrest. The cushion is optional.



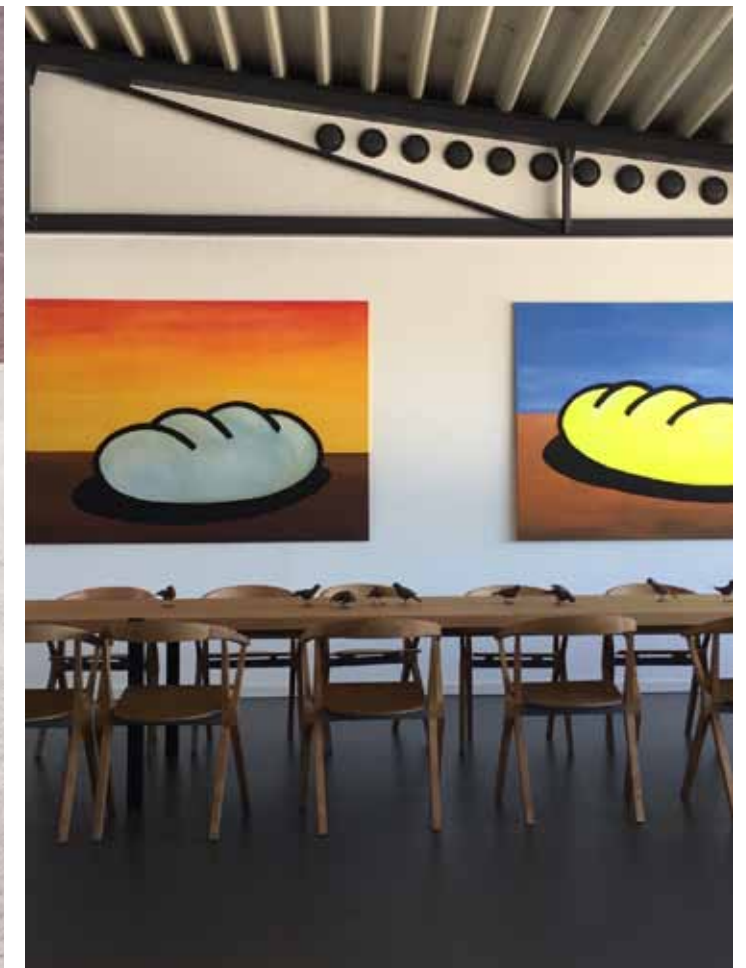


STORAGE AND SHELVING / ARMCHAIRS AND SOFAS / TABLES / **CHAIRS AND STOOLS** / ACCESSORIES AND LIGHTING / PUBLIC SEATING

Chair B

Konstantin Grcic

This chair won the ADI-FAD Delta Silver Award in 2011. In its singularity, complex engineering is hidden. The very fact that the seat can be folded up opens the possibilities for the use of this chair in multi-use spaces.



Nething Office - Germany

Showtime chair

Jaime Hayon

The Showtime Chair gives honour to the very name of this collection. Two distinct leg structures, optional armrests with a wide variety of finishes - wooden or lacquered in diverse colours and upholstered in different materials and leathers by BD, which avails all possible combinations and contrasts.





Casa Vogue - (By Patricia Martínez)



Private housedesigned by Ace of Space - Estonia

STORAGE AND SHELVING / ARMCHAIRS AND SOFAS / TABLES / **CHAIRS AND STOOLS** / ACCESSORIES AND LIGHTING / PUBLIC SEATING

Gaulino chair

Oscar Tusquets

The Gaulino Chair is one of the best designs by Oscar Tusquets. The chair is made integrally from wood and leather and has converted into an icon in Spanish design. Its name comes from the influences that inspired the designer: Antoni Gaudi and Carlo Mollino.



Grasso stool

Stephen Burks

“Grasso is not fat. Grasso is more than fat. It’s overflowing.”
This is how Stephen Burks sums up his new collection for BD.
The stool perfectly complements the armchair and is made in
the same structure and upholstery colors. It stands out due to
its oozing cushion embedded within the metallic structure.



Jamaica stool

Pepe Cortés

The Jamaica Stool is already a classic in Spanish design and is one of the best designed stools in all history. It's been on the market for over 25 years and remains as current as its first day, both the aluminium version as well as the wooden, beech version.



Private housedesigned by Ace of Space - Estonia

Binaria stool

Otto Canalda and Jorge Badía

This stool has been an icon in Spanish design since the beginning of the 21st Century. Developed by a Dentist and an Industrial Designer to improve the ergonomics of certain professions, and has since been placed in an infinity of clinics, opticians, hairdressers and laboratories.





Design Collection

June 2018

Storage and shelving

Armchairs and sofas

Tables

Chairs and stools

Accessories and lighting

Public seating

Candelabro Red Tulip

Oscar Tusquets Blanca

“Is it a tulip? Is it a candle holder where the candle floats and the flame burns behind the red corolla? Is it a vase? It is an absolutely artisanal design, hand blown. Each piece is unique since, inevitably, they differ somewhat from the rest. I do not want to deceive you, it has nothing of ‘industrial design’.”

Oscar Tusquets Blanca



REmix Vol.1 candleholders

Curro Claret

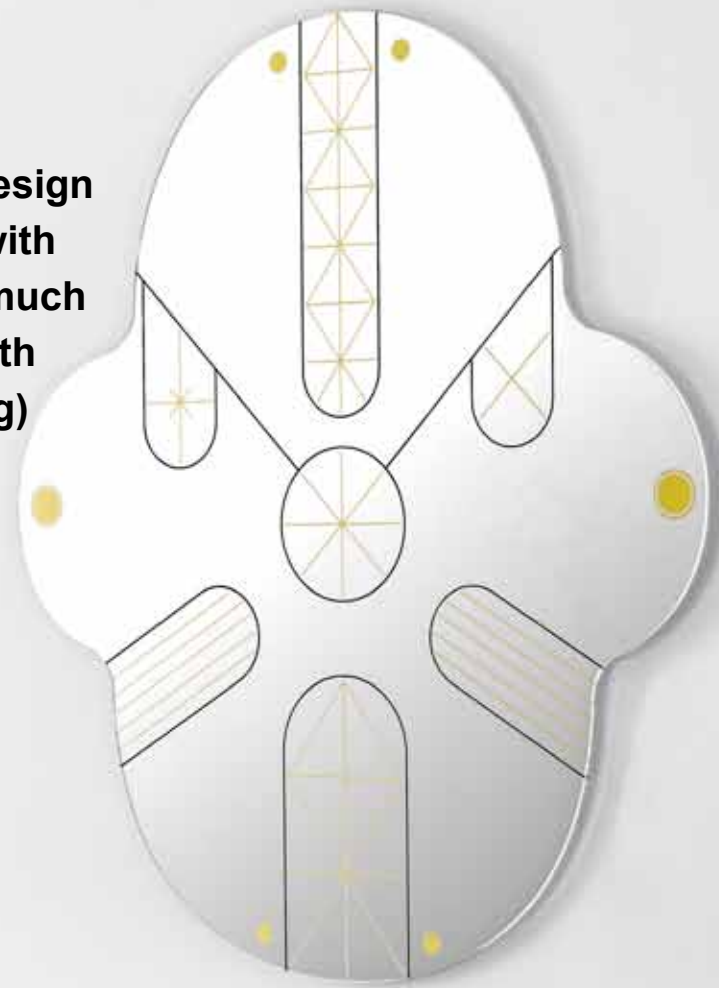
REmix is one of BD's contributions to keep a cleaner world. Curro Claret has taken Cristian Cirici's door hardware (designed years ago) and has converted these into a new collection - a Limited Edition of Candleholders (until stocks last).



King Kong mirrors

Jaime Hayon

When we asked Jaime Hayon to design a new mirror for BD, he came up with two proposals. We liked them so much that we decided to produce the both of them. Two faces (King and Kong) in sizes: 90cm and 120cm.



Grasso vases

Stephen Burks

The Grasso vases come in different finishes. The basic versions are either all in white or black with the handle painted in gold. There are also hand painted versions in copper, platinum and gold in the form of spots or small stripes, which give a parallel ethnic and luxurious touch.



Happy Susto vases

Jaime Hayon

We release a new ceramic collection carrying Jaime Hayon's unmistakable hallmark, including his humour. It's called Happy Susto and is manufactured in two sizes, two different colours and finishes.



Fang vases

Xavier Mañosa

Xavier Mañosa is a designer with an artistic profile - fitting in very well with BD. The Fang Vases are hand-turned in his studio by himself and come in two finishes, black and natural.



Gardenias vases

Jaime Hayon

Jaime Hayon designed the Gardenia Vases in terracotta as a complement to his outdoor armchair selection. They are unique, having emerging forms and Hayon's unmistakable hallmark of design.



Showtime vases

Jaime Hayon

The Showtime Vases are just as current as when we launched them over 10 years ago. They are little decorative sculptures that fully reproduce Hayon's universe.



Showtime 10 vases

Jaime Hayon

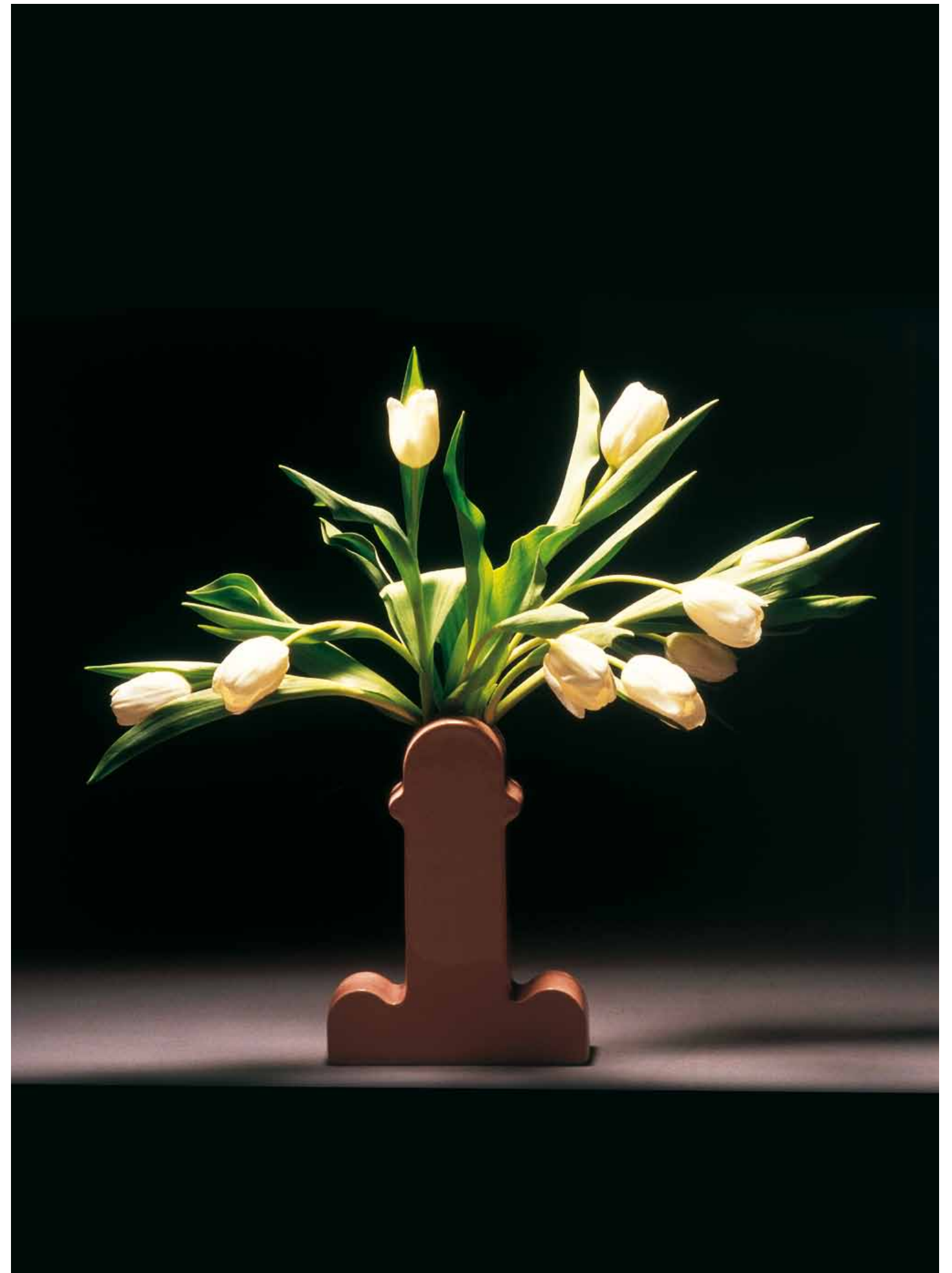
To celebrate the 10th anniversary of the Showtime Collection, we asked Jaime for new vase finishes. His proposal was 24 carat gold, which has been a great success.



Shiva flower vase

Ettore Sottsass Jr.

One of our favourite designs. It has been in production since 1973, and has converted into BD's sign of identity all over the world. Sottsass designed the vase when travelling to Barcelona to meet up with a beautiful Catalan woman with whom he had fallen in love.



Mirallmar mirror

Eduard Samsó

The Mirallmar Mirror is one of the most iconic designs by BD. More than 25 years on after its launch (for a project called Casa Barcelona of the Olympic Games in 1992), it continues to be just as current.



Hotel Camper - España

Showtime mirror

Jaime Hayon

Designed in 2006 by Jaime Hayon for the Showtime Collection, consists of eight overlapping mirrors. There is the possibility of supplying models separately.



MICASA Showroom - Brasil



MICASA Showroom - Brasil

Olvidada standing lamp

Pepe Cortés

Pepe Cortés designed this linestra lamp in 1976, but was forgotten about in a drawer until BD recuperated it and put it into production in 1984. Its name Olivdada (meaning forgotten) comes from these circumstances. More than 40 years on, this design remains just as current as on its first day.

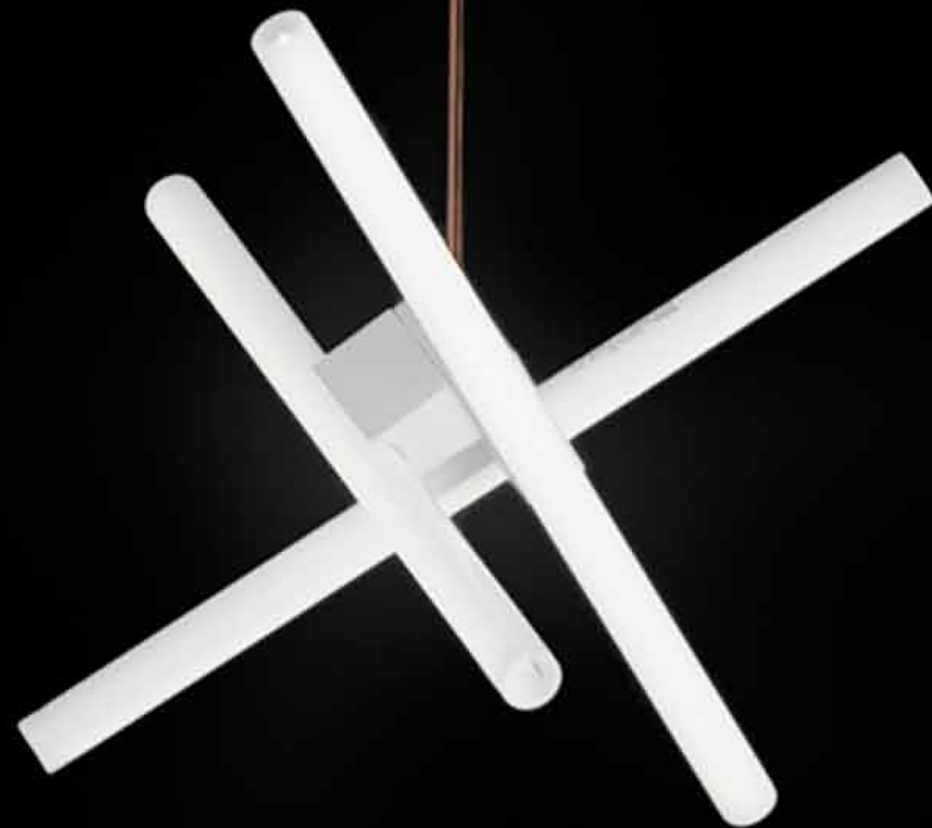


STORAGE AND SHELVING / ARMCHAIRS AND SOFAS / TABLES / CHAIRS AND STOOLS / **ACCESSORIES AND LIGHTING** / PUBLIC SEATING

Olvidada pending lamp

Pepe Cortés

Pepe Cortés designed this linestra lamp in 1976, but was forgotten about in a drawer until BD recuperated it and put it into production in 1984. Its name Olividada (meaning forgotten) comes from these circumstances. More than 40 years after, this design remains just as current as on its first day. It's available in a black cable option or a copper tube finish.



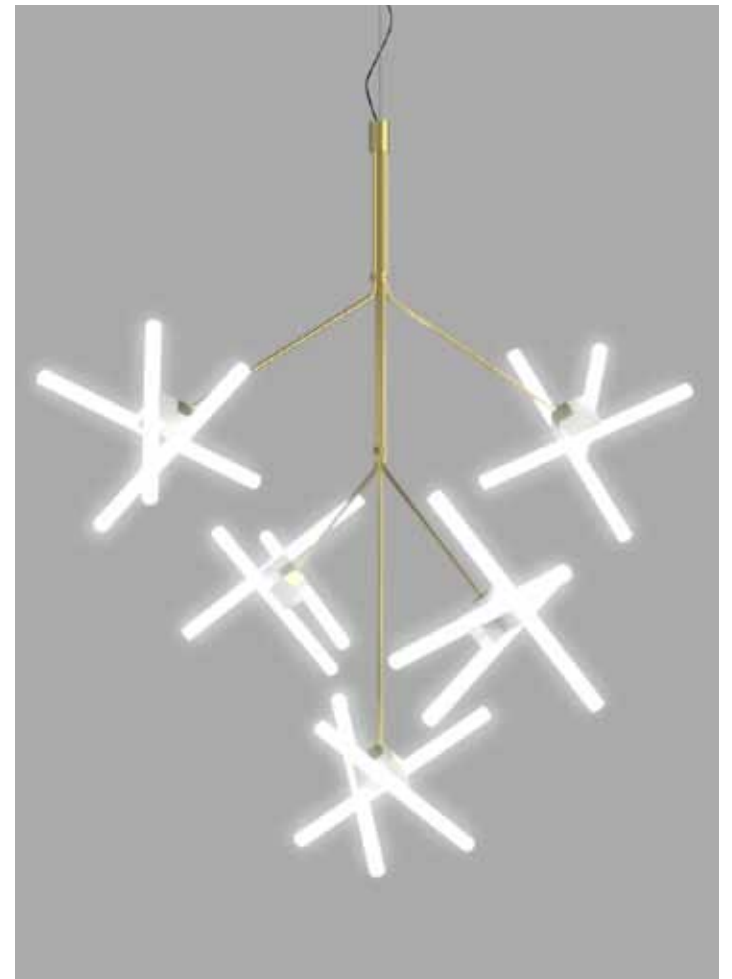
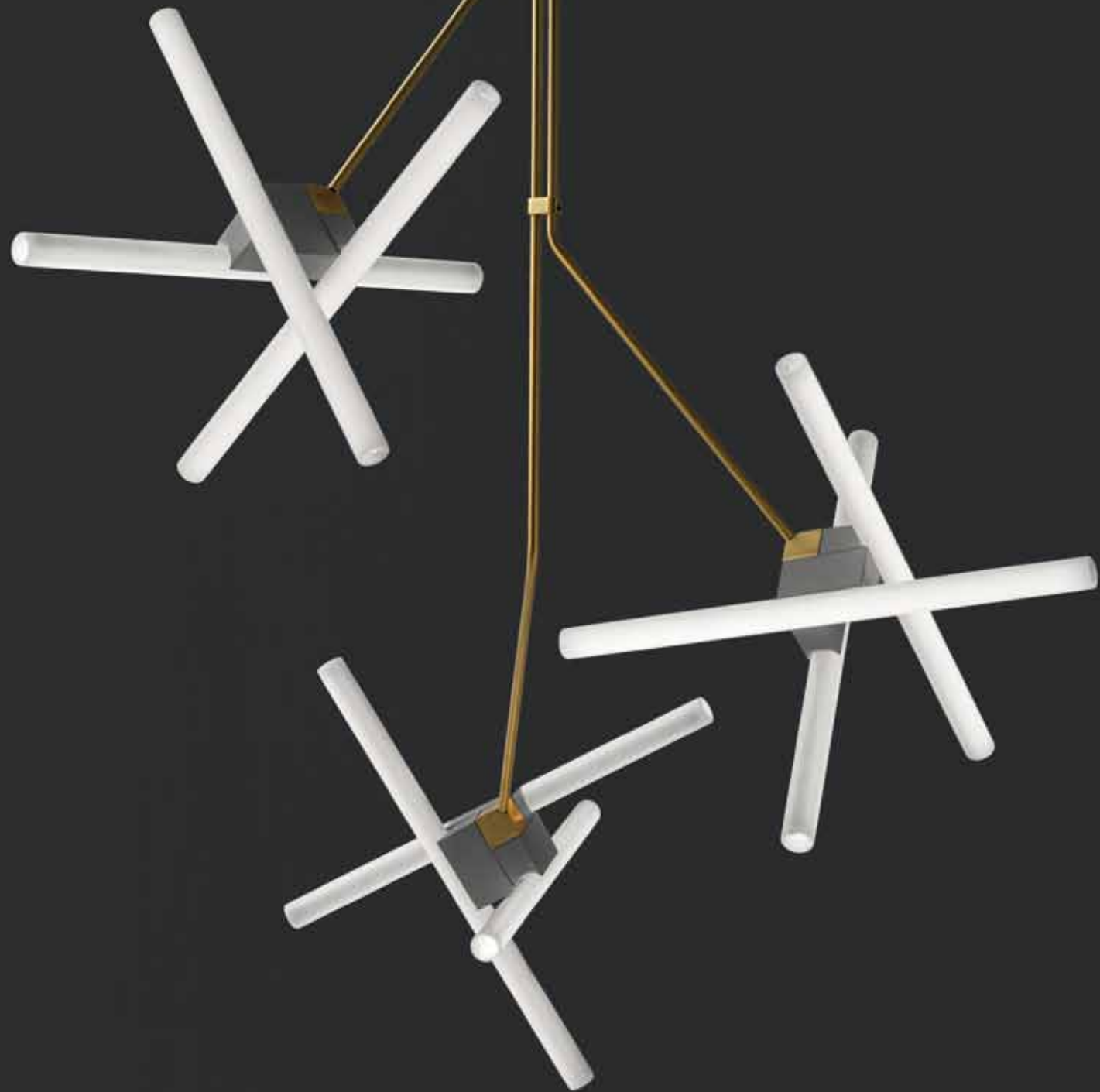
Bank Hu Nan - China



Olvidada chandelier lamp

Pepe Cortés

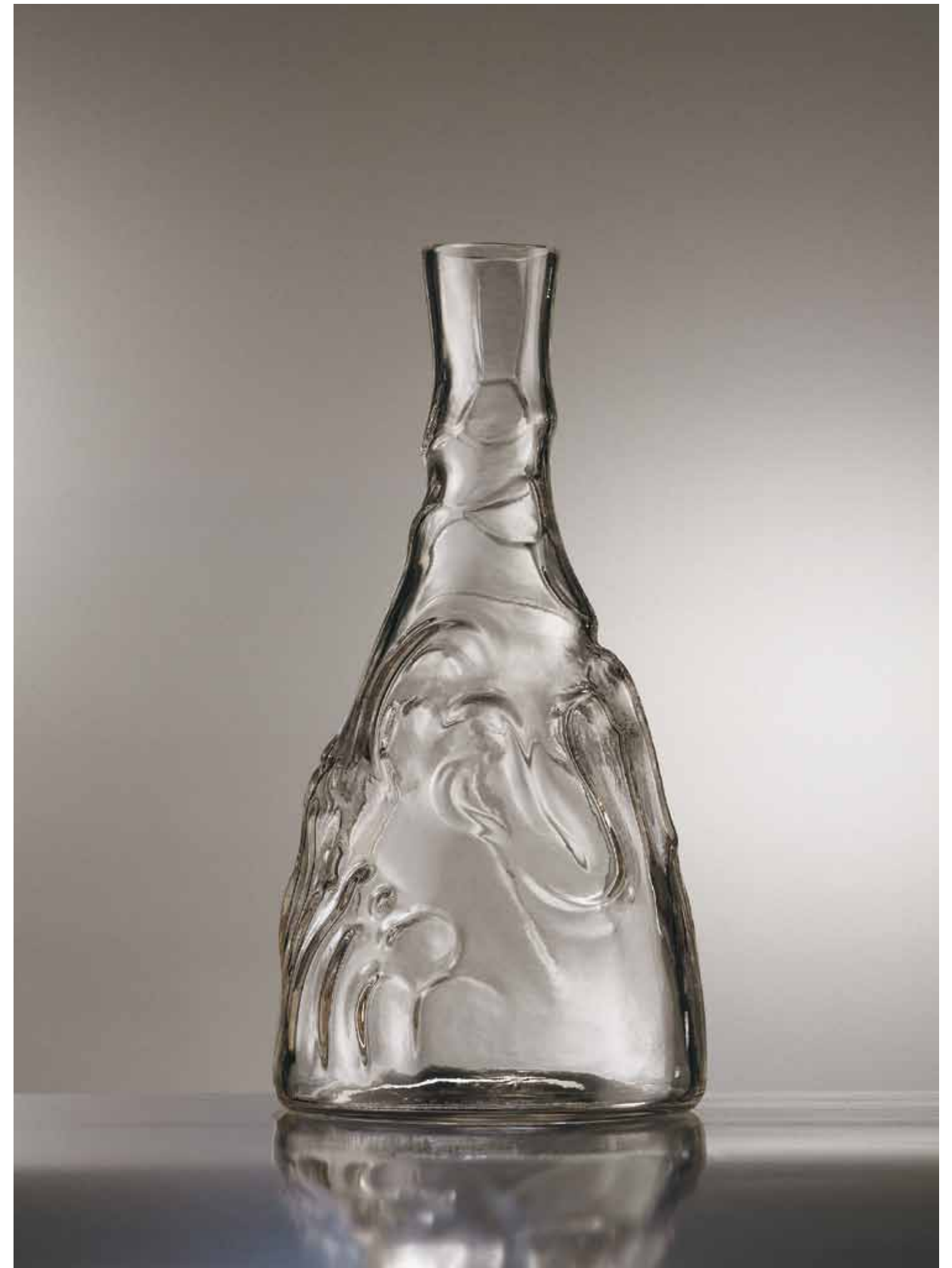
Pepe Cortés designed this linestra lamp in 1976, but was forgotten about in a drawer until BD recuperated it and put it into production in 1984. Its name Olvidada (meaning forgotten) comes from these circumstances. More than 40 years after, this design remains just as current as on its first day.



Casa de Familia bottles

Josep Maria Jujol

The architect Josep Maria Jujol was the closest collaborator with Antoni Gaudi. He designed the Casa de Familia Bottle in 1912, and more than a century later it's still going strong.



STORAGE AND SHELVING / ARMCHAIRS AND SOFAS / TABLES / CHAIRS AND STOOLS / **ACCESSORIES AND LIGHTING** / PUBLIC SEATING

Happy hour trolley

Alfredo Häberli

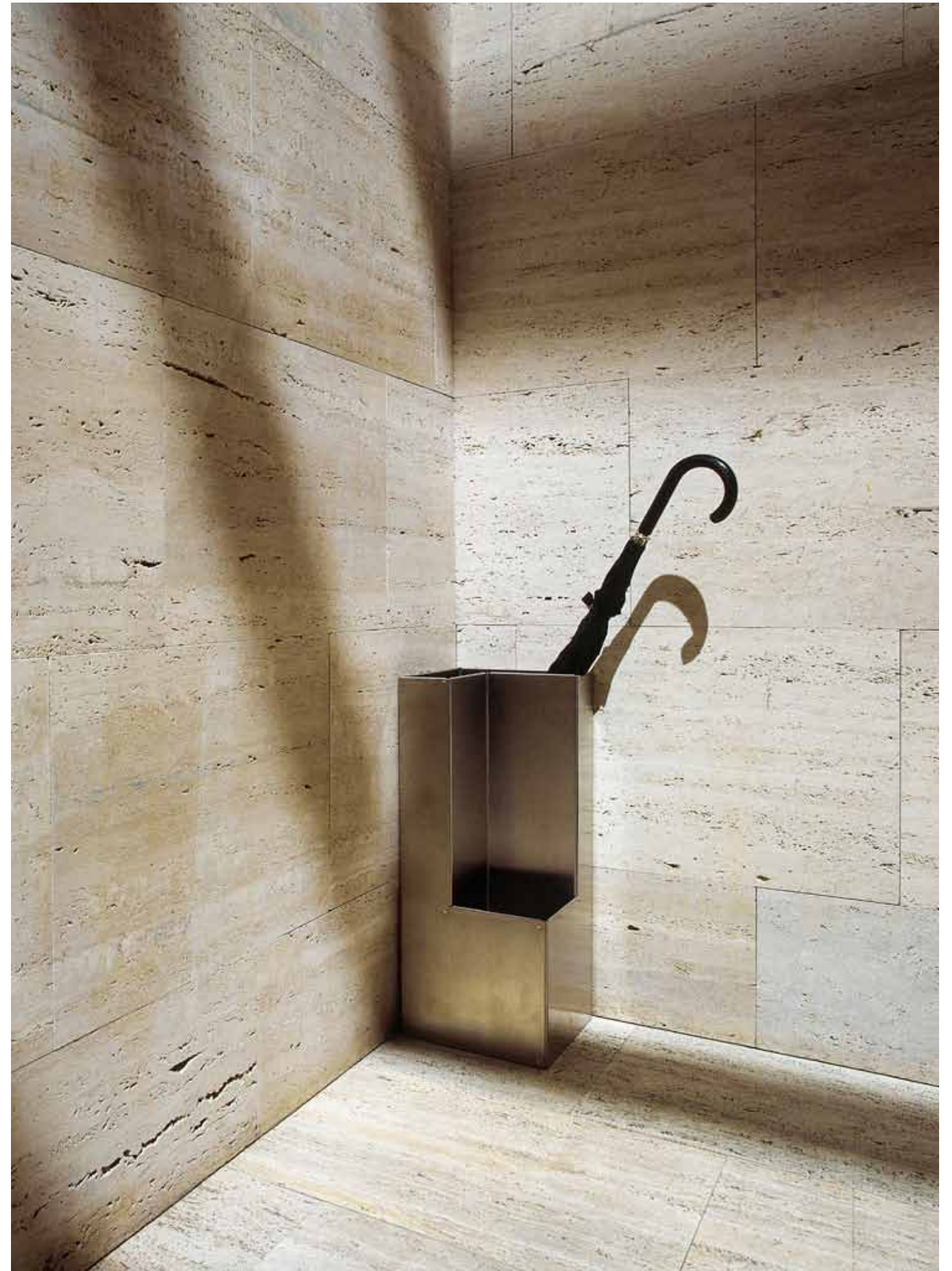
“Looking for lost ideas with a cup in one hand, there came to mind simple solutions with little details of invention, around the ‘bar’ theme. A stool to put personal items on, a central table with a whole in the center, another with a rotating surface which opens up to new uses...little stories that can be written on little match boxes.” Happy Hour has a wide installation furniture programme, which is also thought out to provide helpful service at home.



Plec

Isabel Gamero & Jordi Pérez

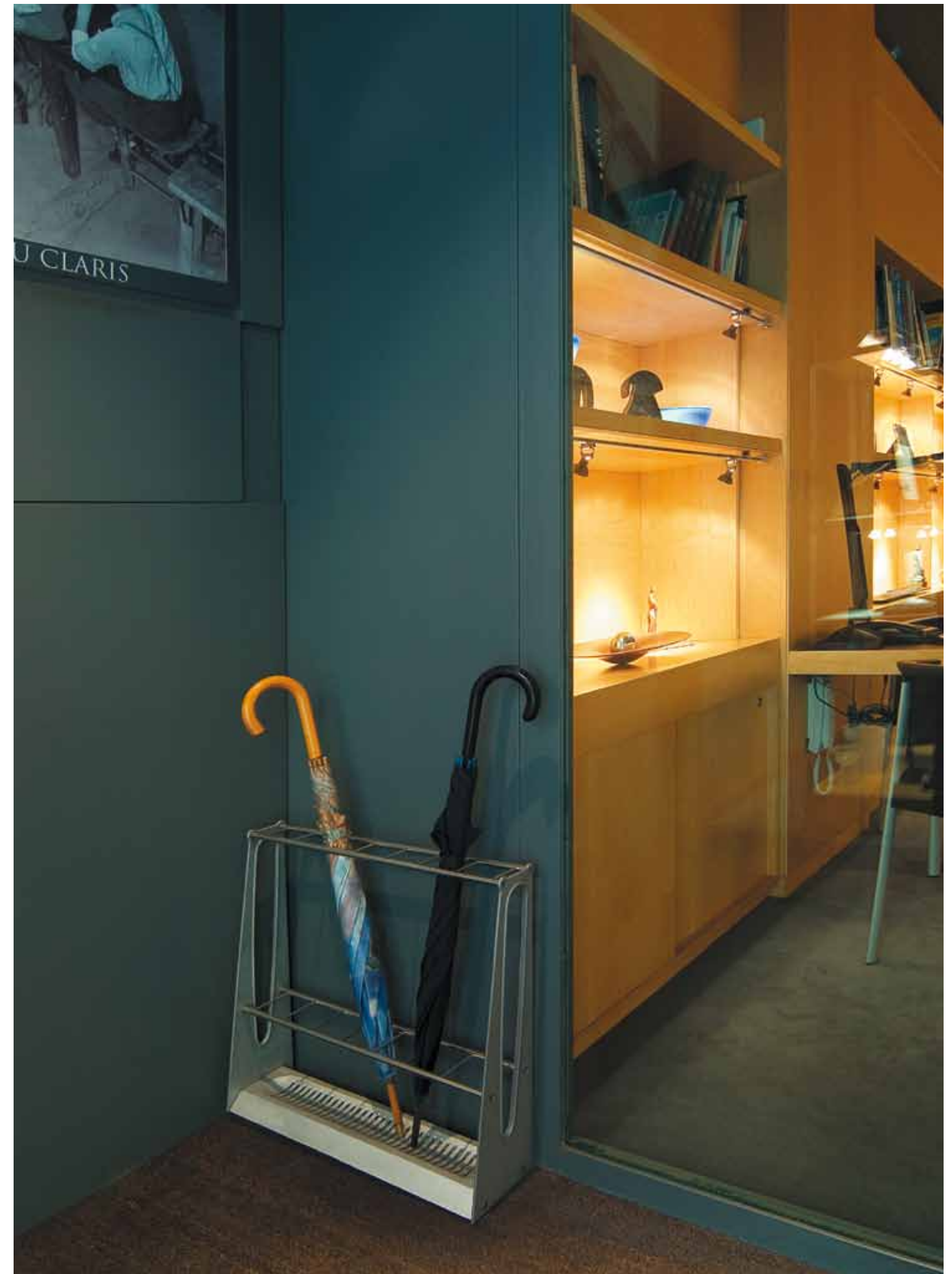
The Plec Umbrella Stand is one of the secrets in our catalogue. It's been in production for more than 20 years and remains just as current and functional as its first day. Elegant and discreet in the home as well as contract.



Barcelonés

Pep Bonet

This Umbrella Stand, together with the Mirallmar Mirror that was designed by Eduard Samsó were both contributions made by BD for the Casa Barcelona Project: 38 Spanish designers for the 1992. “It collects water, can grow, assures order and does not get in the way.” These virtues earned it the Adi-Fad Delta Award in 1991.



Letterboxes 3-4-5

Lluís Clotet & Oscar Tusquets

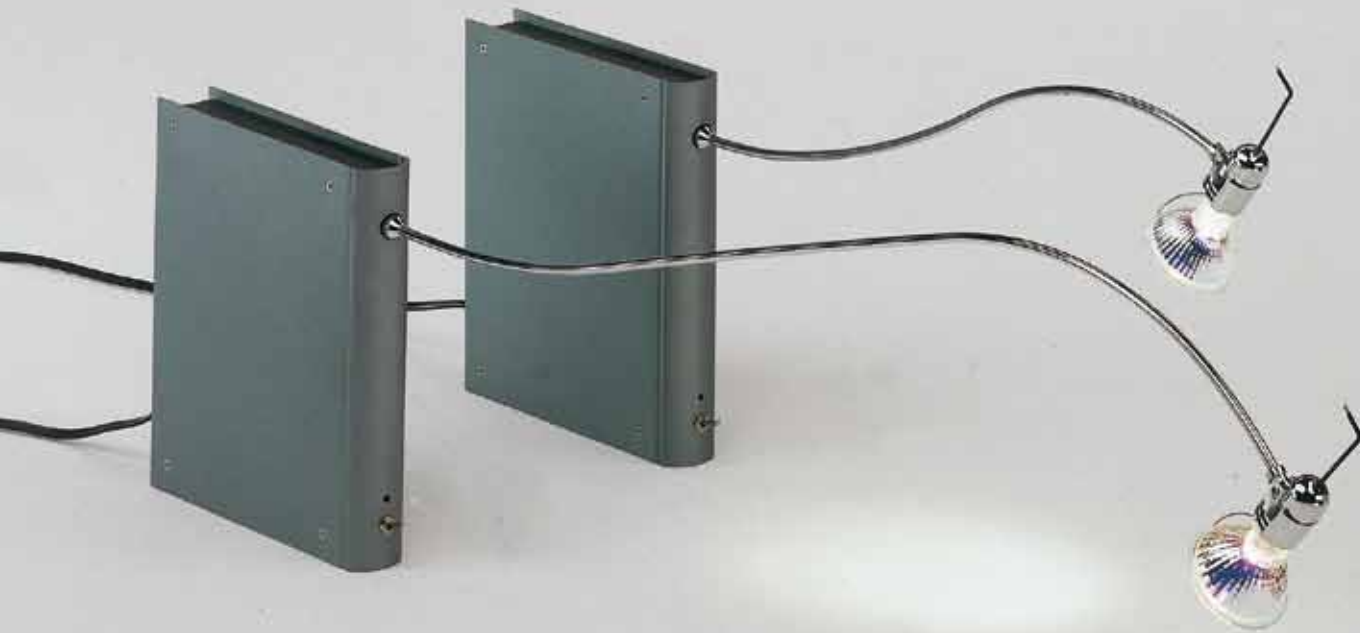
The letterbox 3-4-5 has been in BD's catalogue for over 30 years and has become a classic in Spanish design. Tusquets and Clotet designed the first letterboxes which were placed "in rowlock" that is vertically on one edge. This way they could offer more capacity than the traditional letterbox, visually occupying much lesser space.



Bib luz lamp

Oscar Tusquets

“If I place a lamp on one of the shelves, then all the inferior shelves remain in the shadow. Only by bringing the light source forward can I illuminate the book spines. So, I have a body with a hair and a spotlight on its end. The body holds the transformer and the light switch which should be able to be placed in any position on the shelf, occupying less space and be unnoticeable. What can I imagine better than a book?
OSCAR TUSQUETS.



Flamingo lamp

Álvaro Siza

What distinguishes the Flamingo from any other lamp is its utility. Its unusual height, the quality of light, its neutrality, its apparent fragility in structure (which is variable and can be disassembled) and its mobility of fine wings. All these virtues allow for us to use the lamp in unexpected ways.





Design Collection

June 2018

Storage and shelving

Armchairs and sofas

Tables

Chairs and stools

Accessories and lighting

Public seating

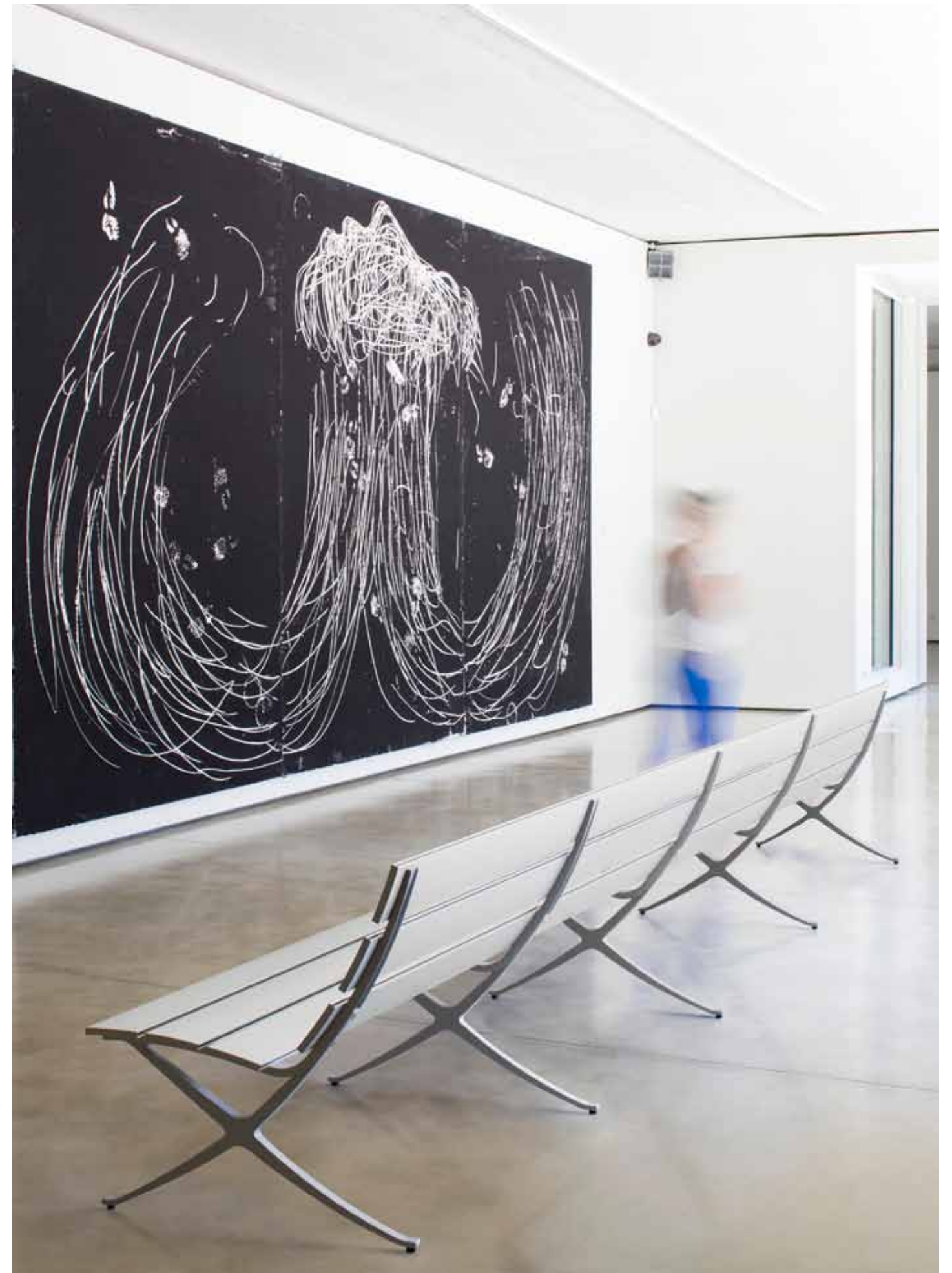
Bench B

Konstantin Grcic

The Bench B is a multifunctional bench for indoor and outdoor use, reaching up to 4.8 metres in length. A bench that is made up of solid extruded aluminium lineal slats and cast aluminium legs.



Vila Casas Foundation - Spain



The Poet

Alfredo Häberli

Alfredo Haberli is a great admirer of designs by Oscar Tusquets and Lluís Clotet. As a tribute to the Catalano and Perforano Benches, he designed the Suizos Benches Collection in perforated painted steel. Out of all the benches, the Poet Bench has become our bestseller.



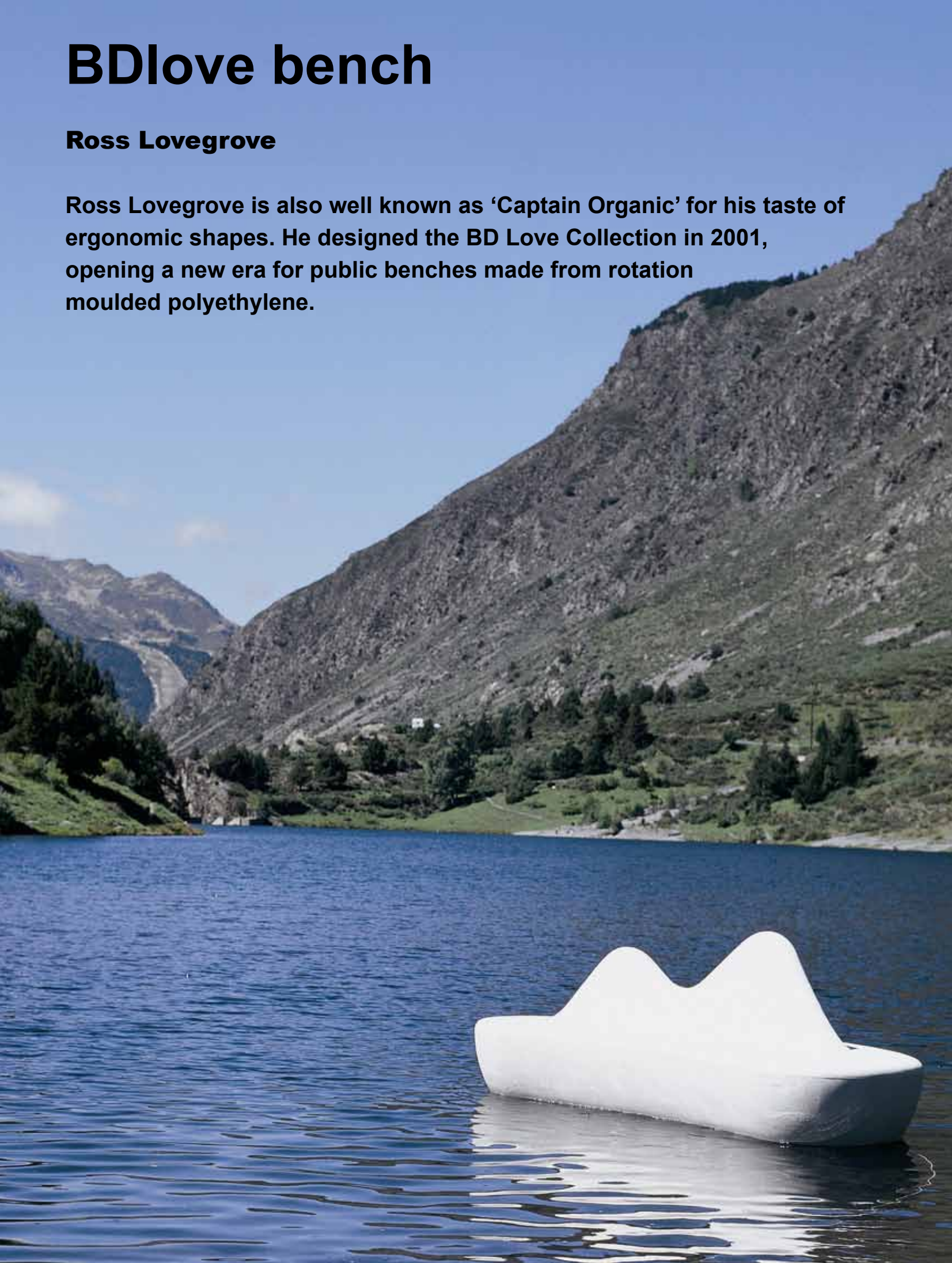
Student residence Poljane - Slovenia



BDlove bench

Ross Lovegrove

Ross Lovegrove is also well known as 'Captain Organic' for his taste of ergonomic shapes. He designed the BD Love Collection in 2001, opening a new era for public benches made from rotation moulded polyethylene.

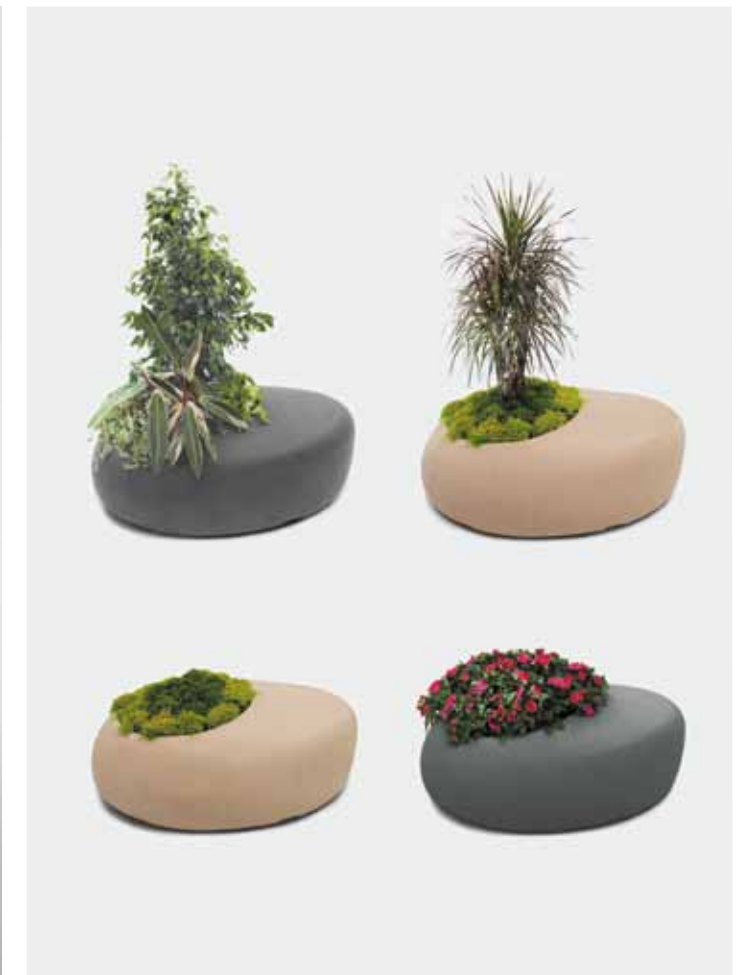




BDlove planter

Ross Lovegrove

The BDLove Collection consists of a bench, a lamp and a planter. The three come in a wide variety of colours and avail a place for somewhere to sit on.



BDlove lamp

Ross Lovegrove

The BDLove Collection consists of a bench, a lamp and a planter. The three come in a wide variety of colours and avail a place for somewhere to sit on.



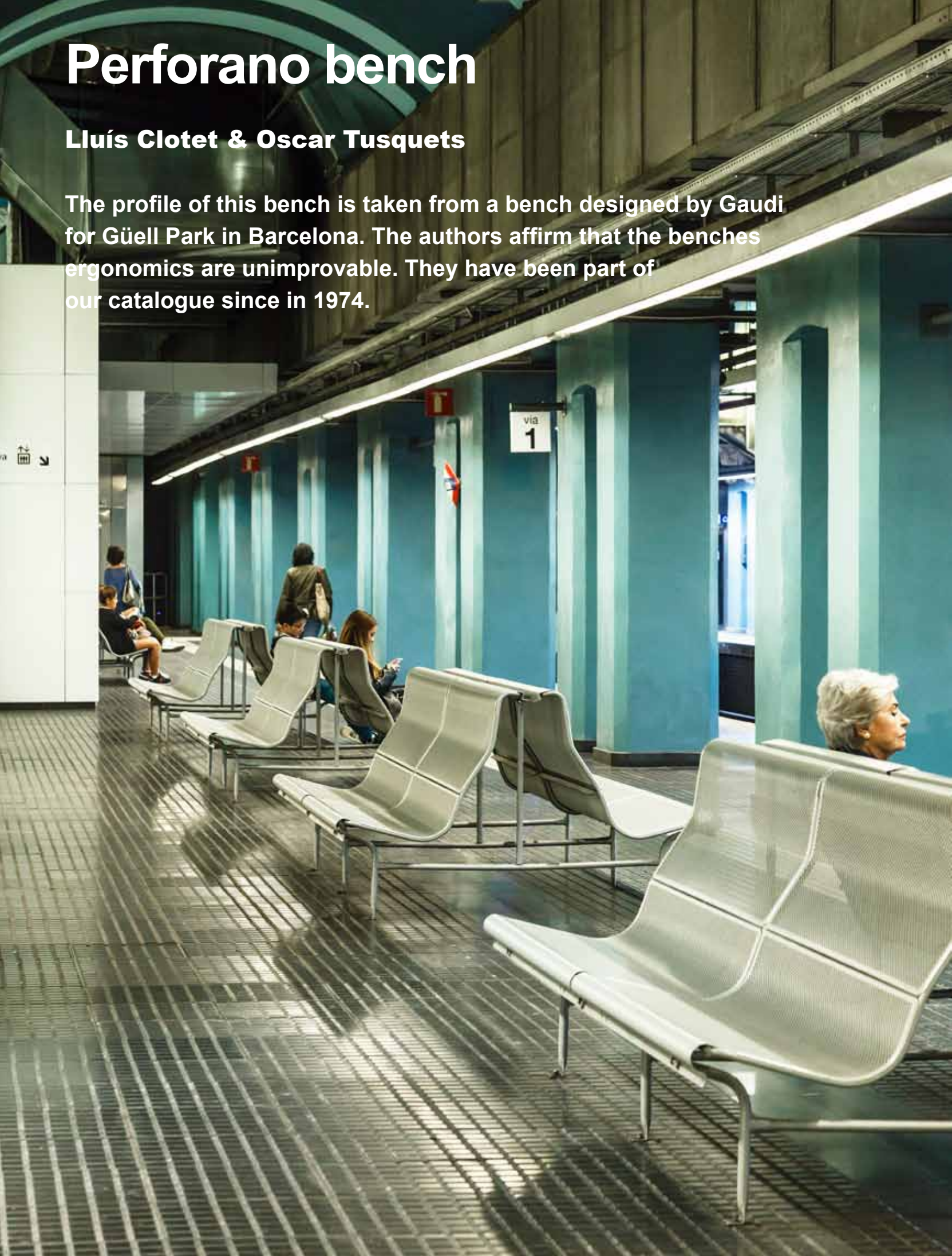
Facultad das Americas - Brasil



Perforano bench

Lluís Clotet & Oscar Tusquets

The profile of this bench is taken from a bench designed by Gaudí for Güell Park in Barcelona. The authors affirm that the benches ergonomics are unimprovable. They have been part of our catalogue since in 1974.



FCC train station - Barcelona (Spain)

Catalano bench

Lluís Clotet & Oscar Tusquets

The profile of this bench is taken from a bench designed by Gaudi for Güell Park in Barcelona. The authors affirm that the benches ergonomics are unimprovable. They have been part of our catalogue since in 1974.



Tienda Berska, Barcelona - España